



Kingston Avenue

, Margate, CT9 5NJ

Offers In The Region Of £260,000



A beautifully presented two double bedroom mid-terrace home that's been thoughtfully renovated throughout, giving it a clean, modern feel while still keeping that warm, welcoming atmosphere the moment you walk in. From the front, you're drawn into a bright and comfortable living space that just feels right – easy to imagine everyday life unfolding here, from slow mornings to relaxed evenings.

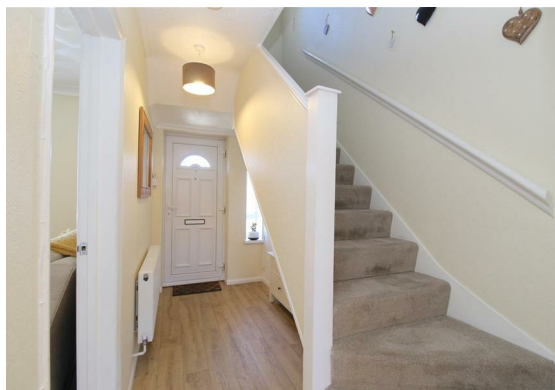
To the rear, the kitchen has been recently updated to a great standard and really adds to the homely feel of the property. It's practical, well laid out, and cleverly set away so you can cook and prep without being on top of guests enjoying the open-plan living/dining space, where natural light flows through from both ends, keeping everything feeling bright and connected. And to the front, those open field views are a real standout – something you don't come across often locally, and it makes a big difference to the overall feel.

Upstairs, both bedrooms are proper doubles, which immediately gives you more flexibility. The main bedroom is a calm, spacious retreat, while the second works perfectly as a guest room, home office or a space to grow into. The bathroom has also been updated in line with the rest of the house, offering a clean, modern finish that's ready to go.

Outside, the garden is a real sun trap with plenty of potential. It feels private and peaceful – ideal for summer evenings, a bit of gardening, or just somewhere to switch off at the end of the day.

Set in a convenient and well-connected location, this is a home you can move straight into and enjoy from day one. It's perfect for first-time buyers, downsizers, or anyone wanting something that feels simple, stylish and already done.

Are you ready to make this home your own? Call TMS Estate Agents – we can't wait to show you around!





Hallway

Kitchen

10'8" x 8'5" (3.26m x 2.57m)

Lounge/ Diner

21'5" x 11'5" (6.55m x 3.50m)

Landing

Bathroom

6'6" x 5'2" (2.00m x 1.59m)

Bedroom one

16'0" x 10'3" (4.90m x 3.14m)

Bedroom Two

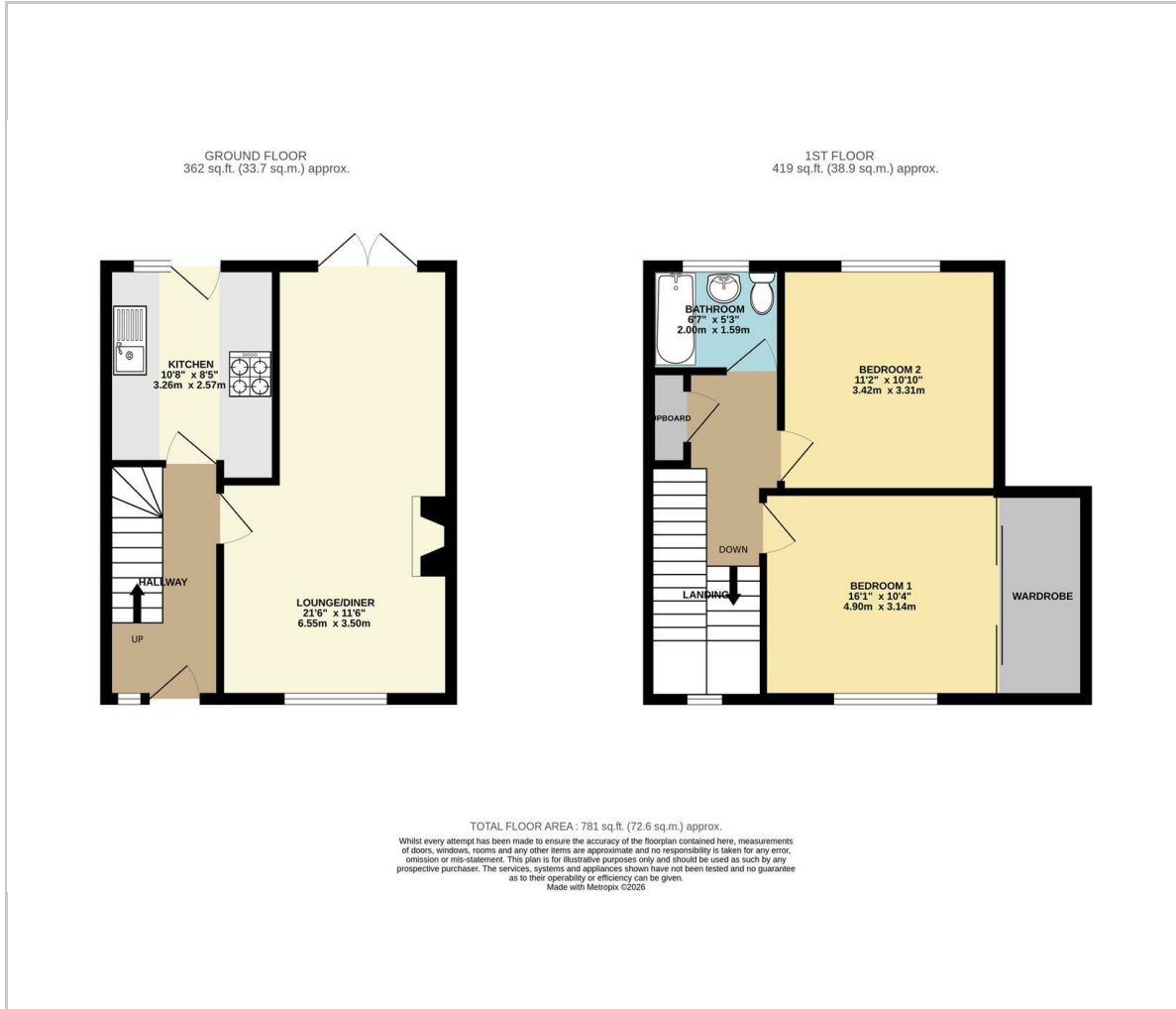
11'2" x 10'10" (3.42m x 3.31m)



Identification checks

Should a purchaser(s) have an offer accepted on a property marketed by TMS Estate Agents, they will need to undertake an identification check. This is done to meet our obligation under Anti Money Laundering Regulations (AML) and is a legal requirement. We use a specialist third party service to verify your identity. The cost of these checks is £50 plus. VAT or £60 inc. VAT per purchaser, which is paid in advance, when an offer is agreed and prior to a sales memorandum being issued. This charge is non-refundable under any circumstances.

Floor Plan



Viewing

Please contact our TMS ESTATE AGENTS Office on 01843 866055 if you wish to arrange a viewing appointment for this property or require further information.

These particulars, whilst believed to be accurate are set out as a general outline only for guidance and do not constitute any part of an offer or contract. Intending purchasers should not rely on them as statements of representation of fact, but must satisfy themselves by inspection or otherwise as to their accuracy. No person in this firms employment has the authority to make or give any representation or warranty in respect of the property.

Kent Innovation Centre Millennium Way, Broadstairs, Kent, CT10 2QQ
t 01843 866055 e info@tmsestateagents.com www.tmsestateagents.com

Area Map



Energy Efficiency Graph

